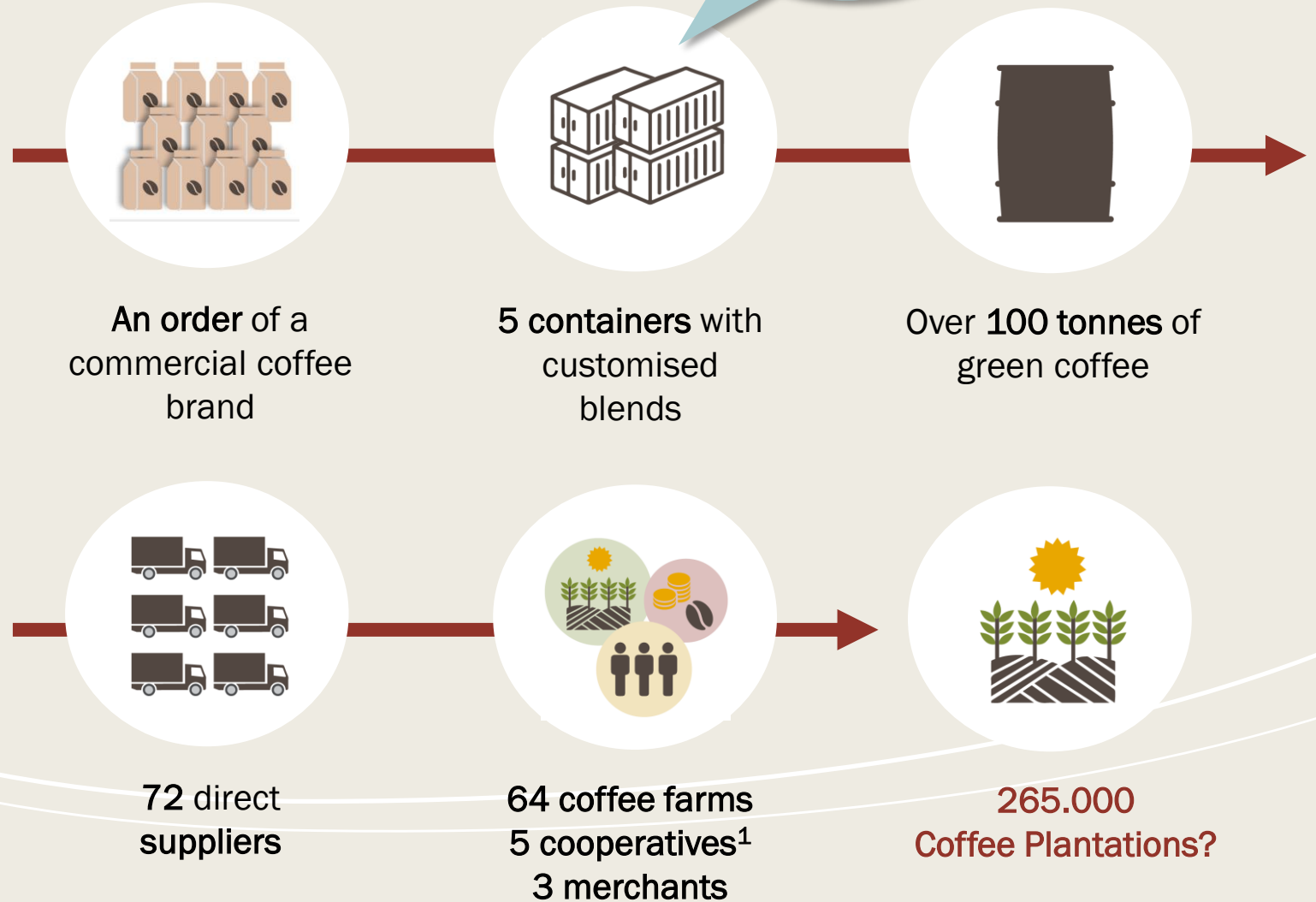


The Journey of a Brazilian Coffee Bean

Brazil has 265.000 Coffee Farms out of which 33% are smaller than 5 hectares in size, accounting for 7% of their total production



Brazil accounts for 32% of EU Green Coffee imports, the equivalent of **46.500 containers or 95 million administrative processes**

(1) Brazilian Coffee cooperatives can have between 5.000 and 16.000 members