



STOCKS EUROPEAN PORTS

2024

RECAPITULATION OF GREEN COFFEE STOCKS IN THE MAJOR COFFEE PORTS OF EUROPE



EUROPEAN
COFFEE
FEDERATION

Introduction

The European Coffee Federation provides on a bi-monthly basis a recapitulation of green coffee stocks in the major coffee ports of Europe.

Having Europe not only as the largest coffee market in the world, but also as the largest coffee manufacturer, it seems relevant to be informed of the amount of green coffee physically stocked in EU Ports. The European stock coffee data aim to provide an accurate picture of the amount of coffee stocked in Europe.

This compilation is only possible because of the **generosity** of many **organisations and companies that openly share their data**, with which they are directly contributing to the transparency of the market, essential to guarantee a direct link between producers, manufacturers, and consumers. Their contribution is invaluable and will enable our series to continue to develop into a unique and convenient single source of information on the European stock data. The reports will continue to offer an overview of the historic trends and represent an important tool when analysing and understanding market behaviour. For ease of comparison, the monthly statistics shall be compiled into an annual report at the end of each calendar year. The statistics are available only in electronic format on the ECF website.

Disclaimer: The European Coffee Federation pays a great deal of attention to the accuracy of the provided statistics assuming no responsibility for the input provided by the organisations and companies sharing their data. Nevertheless, should you find any errors or incorrect information please let us know. Thank you.

Monthly overview of the green coffee stocks in major European coffee ports

This section provides an overview of the coffee stocks in Europe between 31 January 2024 and 31 December 2024. Stocks include ICE certified stocks as well as non-exchange stocks.

The data are supplied by warehousing and port organisations in Europe covering the ports of Antwerp, Hamburg, Le Havre, Barcelona, Trieste, Genoa, Napoli, Tallin, London, Felixstowe, and Bremen (partly).

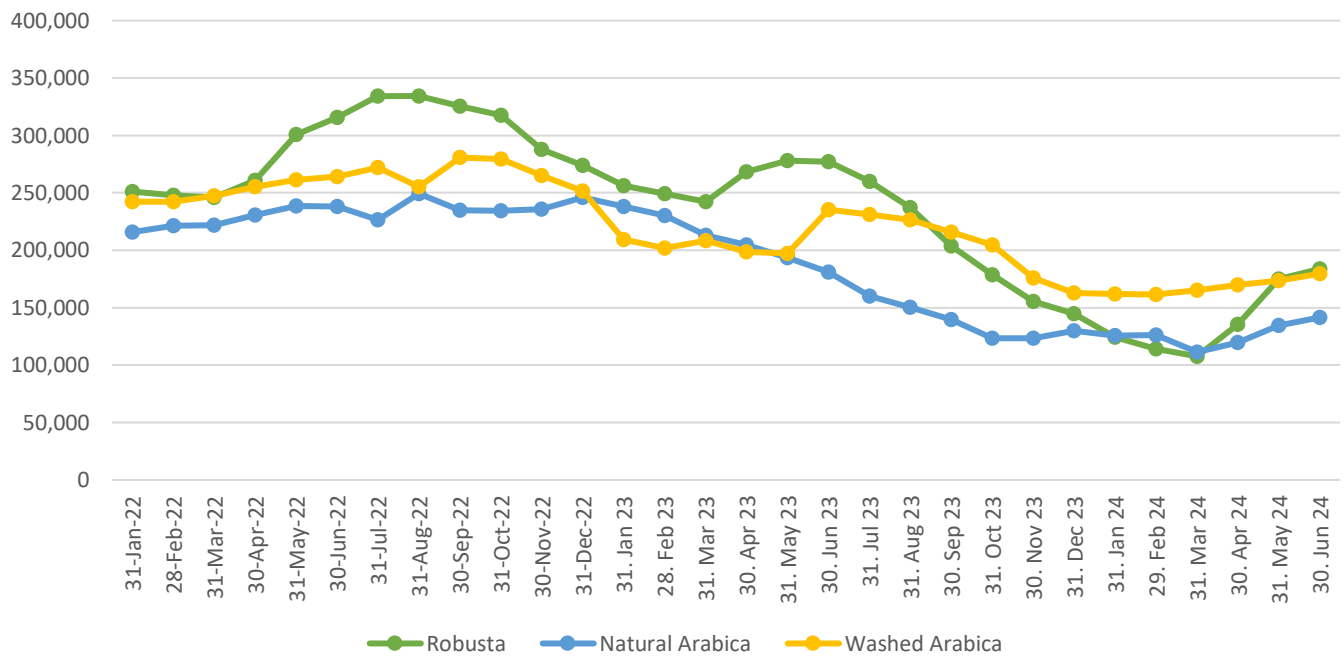
The stocks have been broken down in three categories: Robusta, Natural Arabica (includes Brazil Semi-Washed) and Washed Arabica.

The volumes are in tons.

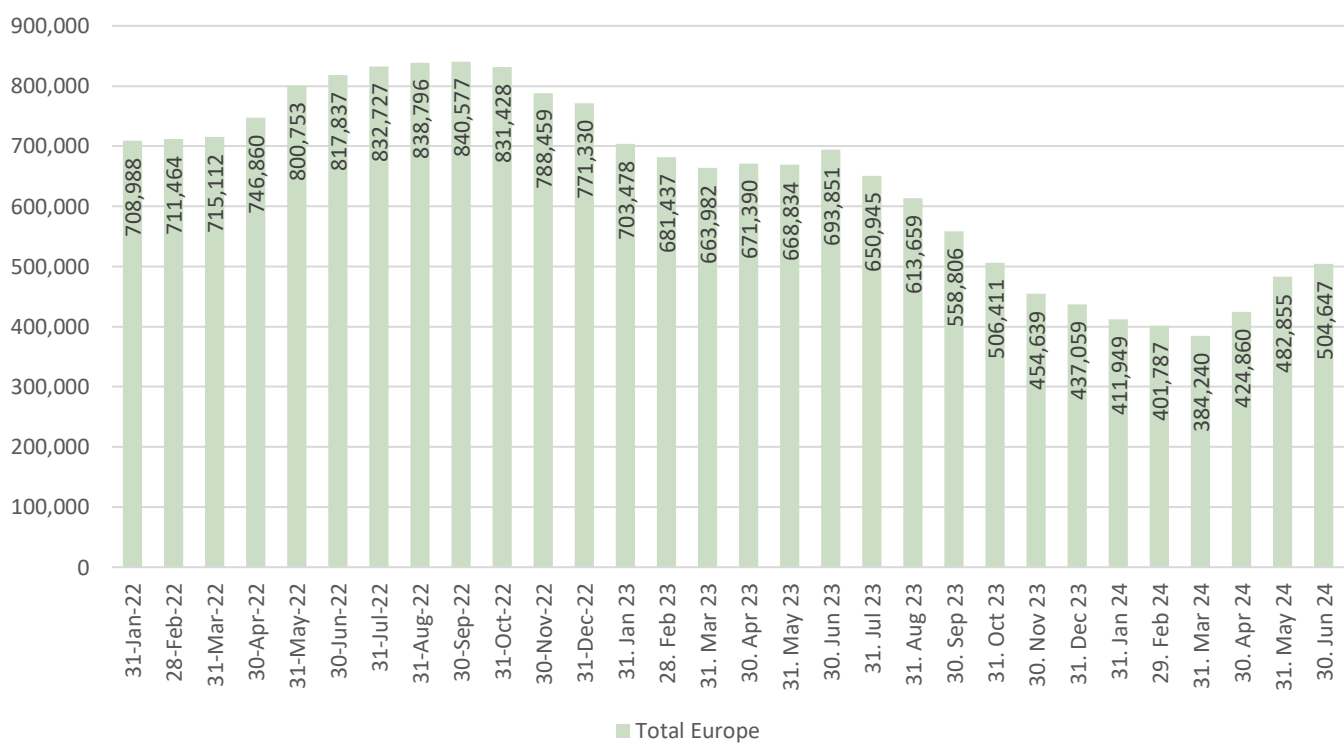
Type of coffee	31-Jan-24	29-Feb-24	31-Mar-24	30-Apr-24	31-May-24	30-Jun-24
Robusta	124,156	114,117	107,661	135,387	174,993	183,755
Natural Arabica	125,653	126,150	111,371	119,781	134,313	141,523
Washed Arabica	162,140	161,520	165,208	169,692	173,549	179,368
Total Europe	411,949	401,787	384,240	424,860	482,855	504,647

Type of coffee	31-Jul-24	31-Aug-24	30-Sep-24	31-Oct-24	30-Nov-24	31-Dec-24
Robusta						
Natural Arabica						
Washed Arabica						
Total Europe						

**Total coffee stocks per type of coffee in the major European coffee ports (in tons)
January 2022 - June 2024**



**Total volume of green coffee stocked in the major European coffee ports (in tons)
January 2022 - June 2024**



Source: Ports of Antwerp, Hamburg, Le Havre, Barcelona, Trieste, Genoa, Napoli, Tallin, London, Felixstowe, and Bremen (partly).

Monthly recapitulation of the green coffee stocks in major European coffee ports

This section provides a recapitulation of the coffee stocks in Europe on a monthly basis between 31 January 2022 and 30 June 2024.

The volumes are in tons.

January 2022

Type of coffee	31-Dec-21	31-Jan-22	Difference
Robusta	259,942	251,299	-8,643
Natural Arabica	215,013	215,603	590
Washed Arabica	247,486	242,087	-5,399
Total Europe	722,440	708,988	-13,452

February 2022

Type of coffee	31-Jan-22	28-Feb-22	Difference
Robusta	251,299	248,039	-3,260
Natural Arabica	215,603	221,337	5,734
Washed Arabica	242,087	242,087	1
Total Europe	708,988	711,464	2,475

March 2022

Type of coffee	28-Feb-22	31-Mar-22	Difference
Robusta	248,039	245,923	-2,116
Natural Arabica	221,337	221,834	497
Washed Arabica	242,087	247,355	5,267
Total Europe	711,464	715,112	3,648

April 2022

Type of coffee	31-Mar-22	30-Apr-22	Difference
Robusta	245,923	260,969	15,046
Natural Arabica	221,834	230,687	8,852
Washed Arabica	247,355	255,204	7,850
Total Europe	715,112	746,860	31,748

May 2022

Type of coffee	30-Apr-22	31-May-22	Difference
Robusta	260,969	300,733	39,764
Natural Arabica	230,687	238,695	8,008
Washed Arabica	255,204	261,325	6,120
Total Europe	746,860	800,753	53,893

June 2022

Type of coffee	31-May-22	30-Jun-22	Difference
Robusta	300,733	315,637	14,904
Natural Arabica	238,695	237,954	-741
Washed Arabica	261,325	264,246	2,921
Total Europe	800,753	817,837	17,084

July 2022

Type of coffee	30-Jun-22	31-Jul-22	Difference
Robusta	315,637	334,174	-18,537
Natural Arabica	237,954	226,582	11,373
Washed Arabica	264,246	271,972	-7,726
Total Europe	817,837	832,727	-14,890

August 2022

Type of coffee	31-Jul-22	31-Aug-22	Difference
Robusta	334,174	334,319	144
Natural Arabica	226,582	249,301	22,719
Washed Arabica	271,972	255,176	-16,796
Total Europe	832,727	838,796	6,068

September 2022

Type of coffee	31-Aug-22	30-Sep-22	Difference
Robusta	334,319	325,217	-9,102
Natural Arabica	249,301	234,679	-14,622
Washed Arabica	255,176	280,681	-25,505
Total Europe	838,796	840,577	-1,781

October 2022

Type of coffee	30-Sep-22	31-Oct-22	Difference
Robusta	325,217	317,554	-7,663
Natural Arabica	234,679	234,543	-136
Washed Arabica	280,681	279,330	-1,351
Total Europe	840,577	831,428	9,149

November 2022

Type of coffee	31-Oct-22	30-Nov-22	Difference
Robusta	317,554	287,700	-29,854
Natural Arabica	234,543	235,690	1,147
Washed Arabica	279,330	265,068	-14,262
Total Europe	831,428	788,459	-42,969

December 2022

Type of coffee	30-Nov-22	31-Dec-22	Difference
Robusta	287,700	273,753	-13,948
Natural Arabica	235,690	245,811	10,120
Washed Arabica	265,068	251,766	-13,302
Total Europe	788,459	771,330	-17,129

January 2023

Type of coffee	31-Dec-22	31-Jan-23	Difference
Robusta	273,753	256,216	-17,536
Natural Arabica	245,811	237,957	-7,854
Washed Arabica	251,766	209,305	-42,462
Total Europe	771,330	703,478	-67,852

February 2023

Type of coffee	31-Jan-23	28-Feb-23	Difference
Robusta	256,216	249,354	-6,862
Natural Arabica	237,957	230,263	-7,694
Washed Arabica	209,305	201,820	-7,484
Total Europe	703,478	681,437	-22,041

March 2023

Type of coffee	28-Feb-23	31-Mar-23	Difference
Robusta	249,354	242,327	-7,027
Natural Arabica	230,263	213,143	-17,119
Washed Arabica	201,820	208,512	6,691
Total Europe	681,437	663,982	-17,456

April 2023

Type of coffee	31 Mar 23	30 Apr 23	Difference
Robusta	242,327	268,182	25,856
Natural Arabica	213,143	204,447	-8,696
Washed Arabica	208,512	198,761	-9,751
Total Europe	663,982	671,390	7,409

May 2023

Type of coffee	30-Apr-23	31-May-23	Difference
Robusta	268,182	278,022	9,840
Natural Arabica	204,447	193,703	-10,744
Washed Arabica	198,761	197,109	-1,652
Total Europe	671,390	668,834	-2,556

June 2023

Type of coffee	31-May-23	30-Jun-23	Difference
Robusta	278,022	277,261	-761
Natural Arabica	193,703	181,182	-12,521
Washed Arabica	197,109	235,408	38,298
Total Europe	668,834	693,851	25,017

July 2023

Type of coffee	30-Jun-23	31-Jul-23	Difference
Robusta	277,261	259,807	-17,454
Natural Arabica	181,182	160,065	-21,117
Washed Arabica	235,408	231,073	-4,335
Total Europe	693,851	650,945	-42,906

August 2023

Type of coffee	31-Jul-23	31-Aug-23	Difference
Robusta	259,807	237,112	-22,694
Natural Arabica	160,065	150,207	-9,858
Washed Arabica	231,073	226,339	-4,733
Total Europe	650,945	613,659	-37,286

September 2023

Type of coffee	31-Aug-23	30-Sep-23	Difference
Robusta	237,112	203,552	-33,560
Natural Arabica	150,207	139,429	-10,779
Washed Arabica	226,339	215,825	-10,514
Total Europe	613,659	558,806	-54,853

October 2023

Type of coffee	30-Sep-23	31-Oct-23	Difference
Robusta	203,552	178,472	-25,081
Natural Arabica	139,429	123,335	-16,093
Washed Arabica	215,825	204,604	-11,220
Total Europe	558,806	506,411	-52,395

November 2023

Type of coffee	31-Oct-23	30-Nov-23	Difference
Robusta	178,472	155,591	-22,880
Natural Arabica	123,335	123,343	8
Washed Arabica	204,604	175,705	-28,900
Total Europe	506,411	454,639	-51,772

December 2023

Type of coffee	30-Nov-23	31-Dec-23	Difference
Robusta	155,591	144,559	-11,033
Natural Arabica	123,343	129,668	6,325
Washed Arabica	175,705	162,833	-12,872
Total Europe	454,639	437,059	-17,580

January 2024

Type of coffee	31-Dec-24	31-Jan-24	Difference
Robusta	144,559	124,156	-20,403
Natural Arabica	129,668	125,653	-4,015
Washed Arabica	162,833	162,140	-692
Total Europe	437,059	411,949	-25,110

February 2024

Type of coffee	31-Jan-24	29-Feb-24	Difference
Robusta	124,156	114,117	-10,039
Natural Arabica	125,653	126,150	497
Washed Arabica	162,140	161,520	-620
Total Europe	411,949	401,787	-10,162

March 2024

Type of coffee	29-Feb-24	31-Mar-24	Difference
Robusta	114,117	107,661	-6,455
Natural Arabica	126,150	111,371	-14,780
Washed Arabica	161,520	165,208	3,688
Total Europe	401,787	384,240	-17,547

April 2024

Type of coffee	31-Mar-24	30-Apr-24	Difference
Robusta	107,661	135,387	27,725
Natural Arabica	111,371	119,781	8,411
Washed Arabica	165,208	169,692	4,484
Total Europe	384,240	424,860	40,620

May 2024

Type of coffee	30-Apr-24	31-May-24	Difference
Robusta	135,387	174,993	39,606
Natural Arabica	119,781	134,313	14,532
Washed Arabica	169,692	173,549	3,857
Total Europe	424,860	482,855	57,995

June 2024

Type of coffee	31-May-24	30-Jun-24	Difference
Robusta	174,993	183,755	8,763
Natural Arabica	134,313	141,523	7,209
Washed Arabica	173,549	179,368	5,820
Total Europe	482,855	504,647	21,792

Last updated: 30 July 2024

Next update scheduled: 30 September 2024